

#### WASTEWATER TREATMENT PLANT CONSTRUCTION UPDATES

The District and its contractors have made significant progress on the Wastewater Treatment Plant (WTP) upgrades. In the Fall 2022, crews completed the expansion work to the Chlorine Contact Basin just in time for the winter discharge season.

Work on the Headworks was suspended during the periods of heavy rainfall. When the contractors returned in April, they made considerable progress on the project. Efforts included excavation of a new channel, installation of new influent piping, establishing footings, and completing the placement of concrete. This is a big milestone for the project.

“It was a challenge to construct and pour the new Headworks channel alongside the existing channel, which was necessary to keep providing sanitary sewer service during construction. I am pleased that our crew was able to successfully complete the work in a challenging location,” commented Andre Hamilton, Superintendent, Gateway Pacific Contractor.

Completion of the Irrigation Pump Station improvements later this summer will involve installing four high-capacity pumps, new electrical service, and automation.

“Improvements to the Headworks will significantly reduce the risk of overflows and will provide more efficient removal of debris that can cause problems to the treatment process. The new automation and electrical controls will allow the operators to better monitor and control the process remotely. We are grateful for the USDA Rural Development program that contributed 70% of the funds to make this project affordable to the District and our customers,” stated Hugh Logan, District General Manager.

HEADWORKS CONSTRUCTION



#### NEED TO PAY YOUR BILL?

The District offers many options!

- By mail
- Via payment drop box at the gate
- In person during office hours
- Bank Bill Pay: Customers can set-up directly from their bank's website. Instructions are on the SASD website.



#### STAFF UPDATE

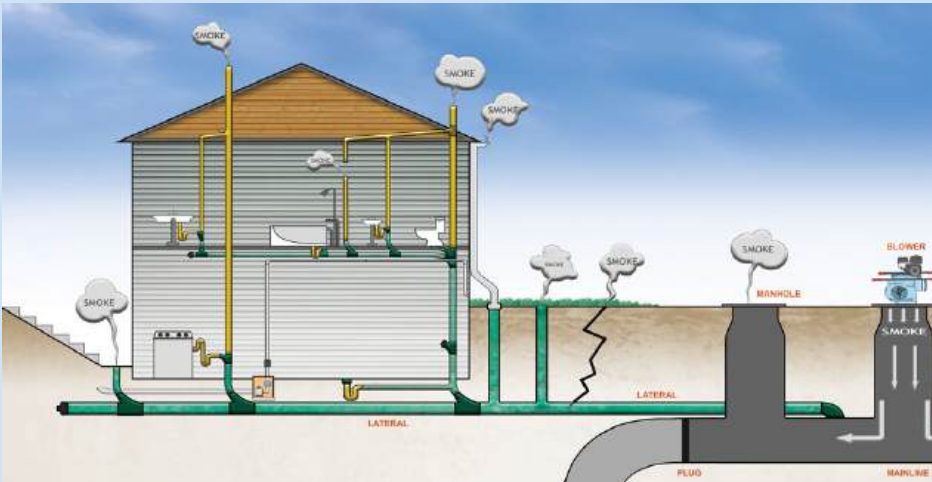


Eric Werner has completed his on-the-job training hours to obtain a Grade 2 Certificate. Congratulations!

## WHAT'S WITH THE SMOKE?

The District periodically conducts smoke testing – a process that involves blowing harmless smoke into parts of the sanitary sewer system to find any leaks or improper connections. Customers are responsible for repairing any noted defects on their property such as broken sewer clean-outs. The District is responsible for cracked sewer pipes, fixing pipe joints, or other related problems that may be identified during the process.

The first round was completed in May and a second round will be conducted in mid-July. Smoke testing helps to keep the sanitary sewer system in healthy shape resulting in a safe, reliable system.



WE'RE  
HIRING



The San Andreas Sanitary District is accepting applications for a full-time Plant Operator. This position is on a career track with an expectation of upward mobility and professional growth. A Plant Operator performs a wide variety of technical tasks and is involved with many initiatives for environmental protection, such as ensuring compliance with State-mantated water quality requirements and with performing laboratory testing of the treated wastewater. This is a challenging and fulfilling career. A full job description detailing the knowledge, skills, and abilities required is posted on [sasanitary.org](http://sasanitary.org). Candidates must have a High School diploma or equivalent, and a valid California Driver's License.

Applications are posted on the District's website at [sasanitary.org](http://sasanitary.org). Completed applications may be mailed to the District office at PO Box 1630, San Andreas, CA 95249 Re: Plant Operator Application.

## HOW TO REACH US

Contact the District at [SASDoffice@comcast.net](mailto:SASDoffice@comcast.net) or (209) 754-3281.

Stay updated on District news at [sasanitary.org](http://sasanitary.org).

After-hour emergency? Call the District's 24-hour Service Line at (209) 754-3281.



**San Andreas**  
Sanitary District

**Clean Water. It's what we do!**